



**Children's  
Centre**  
for Early Childhood  
Development and Parenting



---

# Parks Children's Centre Annual Report 2012



**Government of South Australia**  
Department for Education and  
Child Development

## Context

**Preschool Name:** Parks Children's Centre

**Preschool Number:** 5380

**Preschool Director:** Di Krieg

**Region:** Western Adelaide

The Parks Children's Centre is located in a vibrant multi-cultural community 12 km from the CBD. Being a Children's Centre, we have an extensive range of programs for families and children. These include, preschool, occasional care, playgroup, multi-cultural cooking classes, community school for women, Nunga mums yarning group, child and family health services and visiting health professionals. 2012 saw lots of changes and improvements for The Parks Children's Centre. New staff appointed over the year were:

Di Krieg, Director, Felicia Rasheed, Teacher, Inclusive Preschool Program(IPP), Kaity Adams, Contract Teacher, Rae Mcgrath, ECW2 IPP, Bahiyeh Samimi, Preschool Support, Carlye Bowden, Community Development Coordinator, Catherine Opitz Family Services Coordinator and Rebecca Ash, Occupational Therapist, and together with Julianne Williams, Occasional Care Coordinator, Sharon Brandt, ECW and Karina Dodds, Admin Support, we make up the team!

The beginning of the year saw us with 5 preschool enrolments, which built up over the year to 43, as well as increased enrolments in the occasional care program and playgroup sessions. In occasional care we have 4 sessions a weeks for under 2 year olds and 4 session a week for over 2 year olds We also have 2 playgroups, one on Thursday morning which is facilitated by the OT and one Friday morning which is targeted to multicultural families.

2012 also saw the establishment of the Inclusive Preschool Program, (program for up to 6 children with significant needs). The IPP runs as integrated as possible with in the mainstream program, with staff supporting individual children to achieve their specific goals while learning together with typically developing children. This program has been highly successful this year, reaching its capacity by term 2 and having 3 children transition to school at the beginning of 2013. We have over 80% of children attending our preschool who have English as a second language, with 16 different languages recorded as their first language.



## Quality Improvement Plan

Our Quality Improvement Plan gave us direction for specific areas of improvement. As a new team, our initial task was to develop a philosophy statement with the community that truly reflects how we work with children and families. We also needed to address compliance issues as well as set directions for improvement. Some of these achievements for 2012 are listed below.

Quality Improvement Plan achievements:

### Strategies to support children with non-verbal needs -

- Voice output device and i-pads, purchased
- Staff training in basic signing
- Individual schedule cards developed
- Sensory resources purchased

### Creating a welcoming environment for children and families-

- Outside painting and new signage placed strategically
- Front entrance renovated so staff can see front door and welcome families
- Pin Boards put up in community room and hallway.
- Rugs and furniture replaced
- New verandah and soft fall area installed
- Community consulted re outdoor environment redevelopment.
- Acoustic lining installed to walls and ceiling in preschool room
- New carpet to preschool room
- Extensive number of resources purchased to meet the needs of all children

### Building connections with the local community-

- Stronger connections with United Care Wesley Bowden and Port Adelaide, Primary Health Services, Early Child Parent Services, local preschools, long day care centres and schools
- Flyer drop to over 5,000 houses( DECD communication strategies)
- Established a governing council



### **Quality Improvement Plan for 2013**

We will be consolidating new programs and initiatives introduced during 2012 as well as setting new targets and directions. These include:

#### **Creating a welcoming environment for children and families**

##### **Outdoor redevelopment-**

- Begin work within yard to create dynamic outdoor learning space for children
- Include sustainable practices
- Inclusive of Parks Community Centre redevelopment

##### **Building connections with the local community-**

- Strengthen partnerships with Autism SA, Disability SA, Novita ( for pathway referrals to IPP program)
- New agencies within Parks Community redevelopment

##### **Strategies to support children with non-verbal needs-**

- Touch screen technology confidently integrated into curriculum
- Basic signing embedded

##### **Developing children's listening and oral language skills-**

- Oral discrimination
- Sound discrimination
- Question/answers
- Letter sounds
- Speaking
- Story telling



## Intervention and Support Programs

During 2012, 13 children were referred to support services. Six of these children were enrolled within our IPP program, receiving support from DECD as well as other agencies. Five children were assessed with speech and language needs, while the remaining two children were assessed as significant additional needs. All children continue to make significant gains, with one child being accepted into the speech and language program at West Lakes Preschool and another child transferring into our IPP program in 2013.

## Report from Governing Council

Dated: 10<sup>TH</sup> December 2012

The Parks Children's Centre Preschool started off the year slowly rebuilding itself from the foundation up. The enrolments began slowly with a few students and a new IPP program. Now there are about 40 odd students with next year enrolments almost full. This is also reflected in the enrolments for the occasional care and the numbers of families attending the playgroup. The IPP program headed by Felicia was also very successful which is full and now has a waiting list. This program is very valuable to the community as it complements the existing services at the centre and is the only such program within the area.

The director Dianne Krieg has done a brilliant job of bringing awareness of the preschool's existence throughout the immediate community through fliers, brochures and speaking to the surrounding schools, childcares and community centres. The team of teachers and supporting staff impressed the parents and the community with their friendly caring and open minded approach. They made everyone feel welcomed and they were easy to approach with any problems or issues by all parents especially the ones with English as a second language. Their cohesion and dedication to making education fun for the students is the one of the major contributing factor to the preschool's success.

A parent governing council has also been established and oversees all the major projects and decisions regarding the development of the preschool and centre. One of the major decisions discussed through the year were the renovations of the front office to make it more welcoming and easier for parents to access the wonderful reception and administration staff. This was a complete success and many parents commented on the positive change. Other issues involved the new carpet required, acoustic lining to cover the bare brick walls and major painting work to brighten up the outside walls. New signs were also put up to raise community awareness and assist the new interested parents in finding the school. Many other projects and ideas were discussed to improve the preschool from renovations to activities for the students such as having the fire brigade and fire truck come to the school to talk to the children about fighting fire and safety protocols. Many necessary policies and procedures were passed such as the sun safety and food allergies policy.

In summary as the chairperson of the governing council, I was immensely impressed by the growth achieved in only one year at the preschool and the great team of teachers and staff behind it all. I am very grateful and proud to be involved in the decision making process and having the chance to get to know the fantastic team of teachers. They surely set the standard very high for the other surrounding preschools to follow. I look forward to a new year of continuing growth with the completion of some of the previous projects and to new exciting developments.

Chairperson of Parent Governing Council

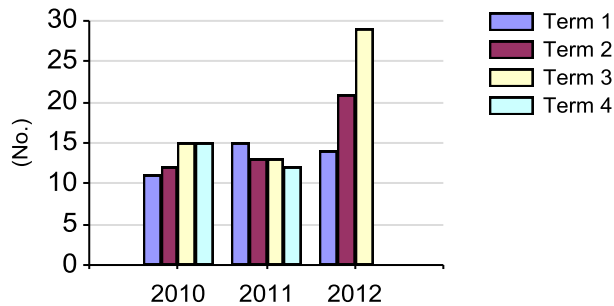
Aimee C Tran

.....

**Student Data**

**Enrolments**

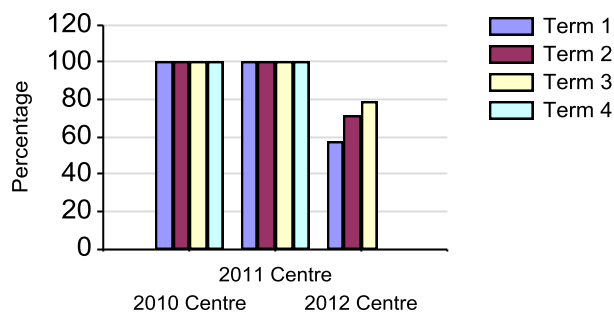
**Total Enrolments 2010 - 2012**



The data shows the rapid growth in the Centre over the year as we make connections with the community and families are aware of the services we offer. During term 4 this has continued to grow with us almost reaching capacity based of our current staffing.

**Attendance**

**Attendance Percentages 2010 - 2012**



Our attendance data is not truly representational of the level of attendance as over the year we have had a large number of children enrolled in early entry.

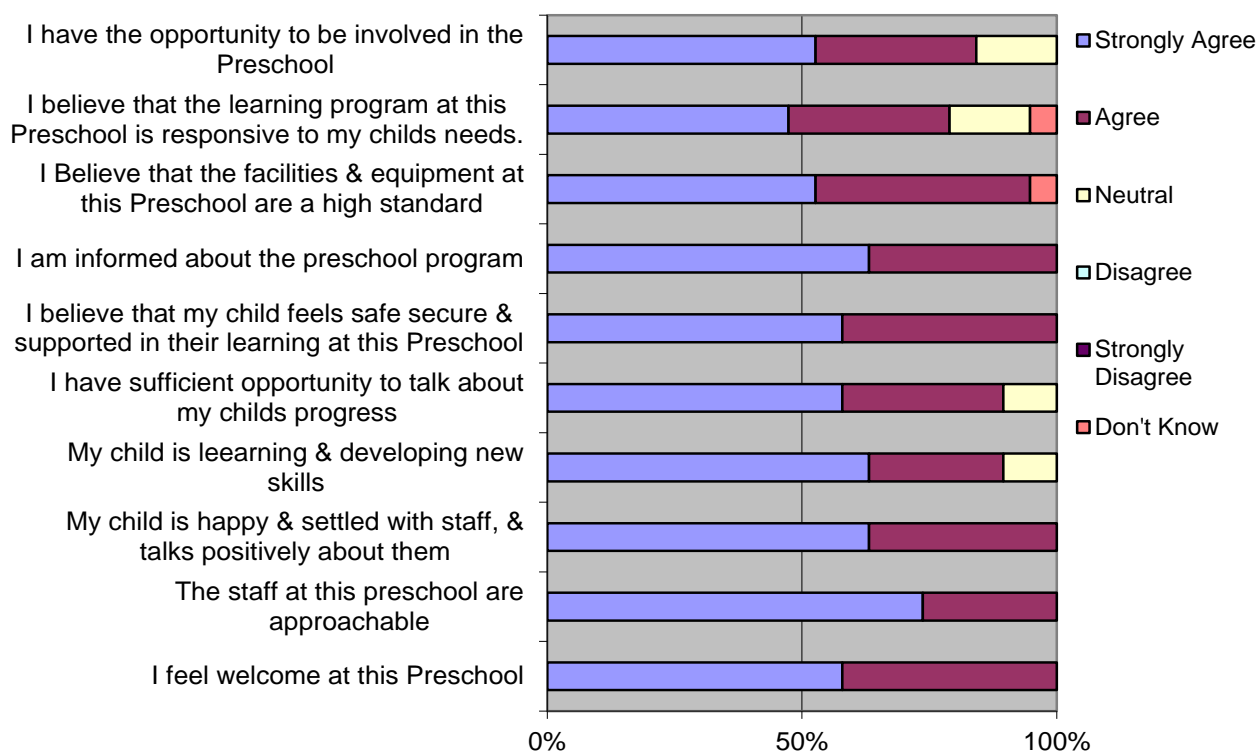
Feeder Schools

Feeder Schools				
Site number - Name	Type	2010	2011	2012
0570 - Prospect North Primary School	Govt.			16.7
0996 - Kidman Park Primary School	Govt.			16.7
1273 - Pennington Junior Primary School	Govt.	20.0		
1903 - Blair Athol North School B-7	Govt.		10.0	
1904 - Woodville Gardens School B-7	Govt.	60.0	70.0	66.7
9018 - St Margaret Mary's School	Non-Govt.	10.0	20.0	
9042 - St Patrick's School	Non-Govt.	10.0		
Total		100.0	100.0	100.1

Client Opinion



### Parent Feedback Survey



The parent survey shows that we are meeting the needs of the community at large, with room for improvement. Some of the comments from the survey were:

**What areas do you think we need to work on to improve this preschool?**

- Encourage children to talk more – telling stories
- Learning the ABC
- Improving children's behavior

**Why did you choose this preschool?**

- Close to home
- Because staff are nice and kind and my child's development is more here
- To join the IPP program

**When I speak to people about this preschool I say**

- My child has made great improvements due to attending
- My child loves to go to preschool and has made some good friends
- The team of teachers work really well together and create a fun, supportive educational place for children.

2012 has been a time of great change and improvement at the Parks Children's Centre. During the year we had many highlights, shared with children, families and the community. In particular were the visits from the local fire service and from Old McDonalds Farm. Our end of year celebration was a fantastic event shared with families from the preschool program, the occasional care program, playgroups and other community groups across the Centre. Over 200 people attended this evening and special thanks go to Mitch for providing the Disco and to The Adelaide Lions Club for providing a BBQ for all. I would like to thank the staff for their passion and dedication to making a real difference in the lives of children and families. I look forward to 2013 with much excitement!

Dianne Krieg  
 Director Parks Children's Centre